

TECHNICAL MANUAL

**ORGANIZATIONAL, DIRECT SUPPORT, AND
GENERAL SUPPORT MAINTENANCE
REPAIR PARTS AND SPECIAL TOOLS LIST**

**COMPRESSOR, AIR, RECIPROCATING:
ELECTRIC MOTOR DRIVEN,
RECEIVER MOUNTED, 5 CFM AT 175 PSI
CHAMPION PNEUMATIC MACHINERY
COMPANY
MODEL NO. HR2-6M-2
NSN 4310-00-054-6647**

Approved for public release; distribution is unlimited.

*This manual supersedes TM 5-4310-358-24P, 14 December 1979

**HEADQUARTERS, DEPARTMENT OF THE ARMY
24 AUGUST 1989**

**Organizational, Direct Support, and General Support Maintenance
Repair Parts and Special Tools List
for
COMPRESSOR, AIR RECIPROCATING: ELECTRIC MOTOR DRIVEN,
RECEIVER MOUNTED, 5 CFM AT 175 PSI
CHAMPION PNEUMATIC MACHINERY COMPANY
MODEL NO. HR2-6M-2
NSN 4310-00-054-6647**

Current as of May 10, 1989

REPORTING OF ERRORS AND RECOMMENDING IMPROVEMENTS

You can help improve this manual. If you find any mistake or if you know of a way to improve the procedures, please let us know. Mail your letter, DA Form 2028 (Recommended Changes to Publications and Blank Forms) or DA Form 2028-2 located in the back of this manual direct to: Commander, U.S. Army Troop Support Command, ATTN: AMSTR-MCTS, 4300 Goodfellow Blvd., St. Louis, MO 63120-1798. A reply will be furnished directly to you.

Approved for public release; distribution is unlimited.

TABLE OF CONTENTS

	Page	Illust/ Figure
Section I. Introduction.....	1	
Section II. Repair Parts List		
Group 01 Belt Guard Assembly	1-1	1
Group 02 Electric Motor.....	2-1	2
Switch Assembly, Pressure	3-1	3
Starter Assembly	4-1	4
Group 03 Air Compressor Assembly.....	5-1	5
Crankcase.....	6-1	6
Valve Assembly	7-1	7
Group 04 Air Receiver Tank and Parts	8-1	8
Check Valve	9-1	9
Section III. Special Tools List (Not Applicable)		
Section IV. Cross Reference Index	I-1	
National Stock Number Index	I-1	
Part Number Index.....	I-2	
Figure and Item Number Index	I-7	

* This manual supersedes TM 5-4310-358-24P, 14 December 1979

**Organizational, Direct Support, and General Support
Maintenance Repair Parts and Special Tools List**

**COMPRESSOR, AIR, RECIPROCATING: ELECTRIC MOTOR DRIVEN,
RECEIVER MOUNTED, 5 CFM AT 175 PSI
CHAMPION PNEUMATIC MACHINERY COMPANY
MODEL NO. HR2-6M-2 NSN 4310-00-054-6647**

SECTION I. INTRODUCTION

1. SCOPE. This RPSTL lists and authorizes spares and repair parts; special tools; special test, measurement, and diagnostic equipment (TMDE); and other special support equipment required for performance of organizational, direct support, and general support maintenance of the Air Compressor. It authorizes the requisitioning, issue, and disposition of spares, repair parts and special tools as indicated by the source, maintenance and recoverability (SMR) codes.

2. GENERAL. In addition to this section, Introduction, this Repair Parts and Special Tools List is divided into the following sections:

a. Section II. Repair Parts List. A list of spares and repair parts authorized by this RPSTL for use in the performance of maintenance. The list also includes parts which must be removed for replacement of the authorized parts. Parts lists are composed of functional groups in ascending alphanumeric sequence, with the parts in each group listed in ascending figure and item number sequence. Bulk materials are listed in item name sequence. Repair parts kits are listed separately in their own functional group within Section II. Repair parts for repairable special tools are also listed in this section. Items listed are shown on the associated illustration(s)/figure(s).

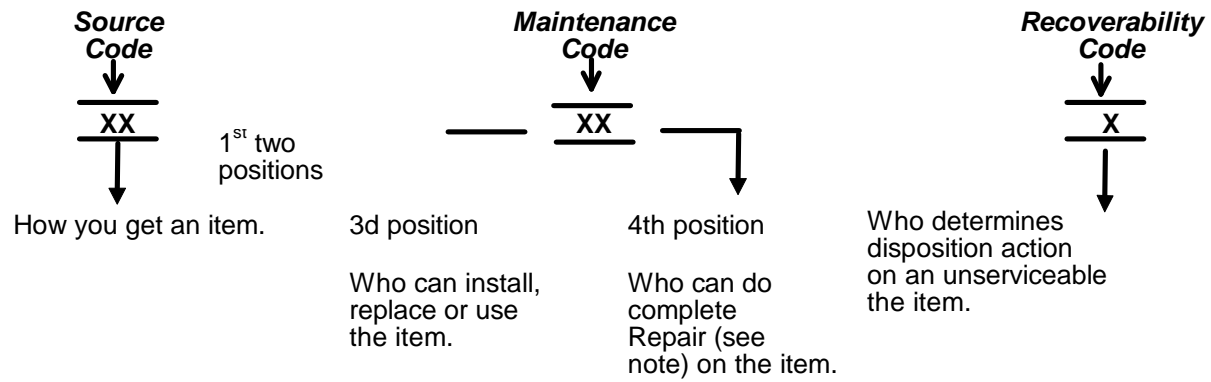
b. Section III. Special Tools List. A list of special tools, special TMDE, and other special support equipment authorized by this RPSTL (as indicated by Basis of Issue (BOI) information in DESCRIPTION AND USABLE ON CODE column) for the performance of maintenance.

c. Section IV. Cross-references Indexes. A list, in National Item Identification Number (NIIN) sequence, of all National stock numbered items appearing in the listing, followed by a list in alphanumeric sequence of all part numbers appearing in the listings. National stock numbers and part numbers are cross-referenced to each illustration figure and item number appearance. The figure and item number index lists figure and item number in alphanumeric sequence and cross-references NSN, FSCM and part number.

3. EXPLANATION OF COLUMNS (SECTIONS II AND III).

a. ITEM NO. (Column (1)). Indicates the number used to identify items called out in the illustration.

b. SMR Code (Column (2)). The Source, Maintenance, and Recoverability (SMR) code is a 5-position code containing supply/requisitioning information, maintenance category authorization criteria, and disposition instruction, as shown in the following breakout:



*Complete Repair: Maintenance capacity, capability, and authority to perform all corrective maintenance tasks of the "Repair" function in a use/user environment in order to restore serviceability to a failed item.

(1) Source Code. The source code tells you how to get an item needed for maintenance, repair, or overhaul of an end item/equipment. Explanations of source codes follows:

Source Code	Explanation
PA PB PC** PD PE PF PG	Stocked items; use the applicable NSN to request(requisition items with these source codes. They are authorized to the category indicated by the code entered in the 3rd position of the SMR code. **NOTE: Items coded PC are subject to deterioration.
KD KF KB	Items with these codes are not to be requested/requisitioned individually. They re part of a kit which is authorized to the maintenance category indicated in the 3rd position of the SMR code. The complete kit must be requisitioned and applied.
MO- (Made at org. AVUM Level) MF- (Made at DS/AVUM Level) MH- (Made at GS Level) ML- (Made at Specialized Repair Activity (SRA)) MD- (Made at Depot)	Items with these codes are not to be requested/requisitioned individually. They must be made from bulk material which is identified by the part number in the DESCRIPTION and USABLE ON CODE (UOC) column and listed in the Bulk Material group of the repair parts list in this RPSTL. If the item is authorized to you by the 3rd position code of the SMR code, but the source code indicates it is made at a higher level, order the item from the higher level of maintenance.

<p>AO- (Assembled by Unit/AVUM Level) AF- (Assembled by DS/AVIM Level) AH- (Assembled by GS Category) AL- (Assembled by SRA) AD- (Assembled by Depot)</p> <p>Code</p>	}	<p>Items with these codes are not to be requested/ requisitioned individually. The puts that make up the assembled item must be requisitioned or fabricated and assembled at the level of maintenance indicated by the source code. If the 3rd position code of the SMR code authorizes you to replace the item, but the source code indicates the items are assembled at a higher level, order the item from the higher level of maintenance.</p> <p style="text-align: center;">Explanation</p>
--	---	--

- XA- Do not requisition "XA"-coded item. Order its next higher assembly. (Refer to the NOTE below.)
- XB- If an UXB item is not available from salvage, order it using the CAGEC and part number given.
- XC- Installation drawing, diagram, instruction sheet, field service drawing, that is identified manufacturer's part number.
- XD- Item is not stocked. Order an XD"-coded item through normal supply channels using the CAGEC and part number given, if no NSN is available.

NOTE

Cannibalization or controlled exchange, when authorized, may be used as a source of supply for items with the above source codes, except for those source coded "XA" or those aircraft support items restricted by requirements of AR 750-1.

- (2) Maintenance Code. Maintenance codes tells you the level(s) of maintenance authorized to USE and REPAIR support items. The maintenance codes are entered in the third and fourth positions of the SMR code as follows:
 - (a) The maintenance code entered in the third position tells you the lowest maintenance level authorized to remove, replace, and use an item. The maintenance code entered in the third position will indicate authorization to one of the following levels of maintenance.

Code	Application/Explanation
C	--Crew or operator maintenance done within organizational or aviation unit maintenance.
O	--Organizational or aviation unit category can remove, replace, and use the item.
F	--Direct support or aviation intermediate level can remove, replace, and use the item.

- H --General support level can remove, replace, and use the item.
- L --Specialized repair activity can remove, replace, and use the item.
- D --Depot level can remove, replace, and use the item.

(b) The maintenance code entered in the fourth position tells whether or not the item is to be repaired and identifies the lowest maintenance level with the capability to do complete repair (i.e., perform all authorized-repair functions.) NOTE: Some limited repair may be done on the item at a lower level of maintenance, if authorized by the Maintenance Allocation Chart (MAC) and SMR codes.. This position will contain one of the following maintenance codes.

Code	Application/Explanation
O	--Organizational or (aviation unit) is the lowest level that can do complete repair of the item.
F	--Direct support or aviation intermediate is the lowest level that can do complete repair of the item.
H	--General Support is the lowest level that can do complete repair of the item.
L	--Specialized repair activity is the lowest level that can do complete repair of the item.
D	--Depot is the lowest level that can do complete repair of the item.
Z	--Nonreparable. No repair is authorized.
B	--No repair is authorized. (No parts or special tools are authorized for the maintenance of a "B" coded item). However, the item may be reconditioned by adjusting, lubricating, etc., at the user level.

(3) **Recoverability Code.** Recoverability codes are assigned to items to indicate the disposition action on unserviceable items. The recoverability code is entered in the fifth position of the SMR Code as follows:

Recoverability Codes	Application/Explanation
Z	--Nonreparable item. When unserviceable, condemn and dispose of the item at the level of maintenance shown in 3d position of SMR Code.

**Recoverability
Codes**

Application/Explanation

- O --Reparable item. When uneconomically reparable, condemn and dispose of the item at organizational or aviation unit level.
- F --Reparable item. When uneconomically reparable, condemn and dispose of the item at the direct support or aviation intermediate level.
- H --Reparable item. When uneconomically reparable, condemn and dispose of the item at the general support level.
- D --Reparable item. When beyond lower level repair capability, return to depot. Condemnation and-disposal of item not authorized below depot level.
- L --Reparable item. Condemnation and disposal not authorized below specialized repair activity (SRA).
- A --Item requires special handling or condemnation procedures because of specific reasons (e.g., precious metal content, high dollar value, critical material, or hazardous material). Refer to appropriate manuals/directives for specific instructions.

c. FSCM (Column (3)). The Federal Supply Code for Manufacturer (FSCM) is a 5-digit numeric code which is used to identify the manufacturer, distributor, or Government agency, etc., that supplies the item.

d. PART NUMBER (Column (4)). Indicates the primary number used by the manufacturer, (individual, company, firm, corporation, or Government activity), which controls the design and characteristics of the item by means of its engineering drawings, specifications standards, and inspection requirements to identify an item or range of items.

NOTE

When you use an NSN to requisition an item, the item you receive may have a different part number from the part ordered.

e. DESCRIPTION AND USABLE ON CODE (UOC) (Column (5)). This column includes the following information:

- (1) The Federal item name and, when required, a minimum description to identify the item.
- (2) The physical security classification of the item is indicated by the parenthetical entry, e.g., Phy Sec C1 - Confidential, Phy Sec C1 (S) - Secret, Phy Sec C1 (T) - Top Secret.

- (3) Items that are included in kits and sets are listed below the name of the kit or set.
- (4) Spare/repair parts that make up an assembled item are listed immediately following the assembled item line entry.
- (5) Part numbers for bulk materials are referenced in this column in the line item entry for the item to be manufactured/fabricated.
- (6) When the item is not used with all serial numbers of the same model, the effective serial numbers are shown on the last line(s) of the description (before UOC).
- (7) The usable on code, when applicable (see paragraph 5, Special Information).
- (8) In the Special Tools List section, the basis of issue (BOI) appears as the last line(s) in the entry for each special tool, special TMDE, and other special support equipment. When density of equipments supported exceeds density spread indicated in the basis of issue, the total authorization is increased proportionately.
- (9) The statement "END OF FIGURE" appears just below the last item description in Column 5 for a given figure in both Section II and Section III.
- (10) The indenture, shown as dots appearing before the repair part, indicates that the item is a repair part of the next higher assembly.

f. QTY (Column (6)). The QTY (quantity per figure column) indicates the quantity of the item used in the breakout shown on the illustration figure, which is prepared for a functional group, subfunctional group, or an assembly. A "V" appearing in this column in lieu of a quantity indicates that the quantity is variable and may vary from application to application.

4. EXPLANATION OF COLUMNS (SECTION IV).

a. NATIONAL STOCK NUMBER (NSN) INDEX.

(1) **STOCK NUMBER column.** This column lists the NSN by National item identification number

(NIIN) sequence. The NIIN consists of the last nine digits of the

$$\frac{\text{NSN}}{\text{NIIN}}$$
 NSN, i.e. (5305-01-574-1467).

When using this column to locate an item, ignore the first 4 digits of the NSN. However, the complete NSN should be used when ordering items by stock number.

(2) **FIG. column.** This column lists the number of the figure where the item is identified/located. The figures are in numerical order in Section II and Section III.

(3) **ITEM column.** The item number identifies the item associated with the figure listed in the adjacent FIG. column. This item is also identified by the NSN listed on the same line.

b. **PART NUMBER INDEX.** Part numbers in this index are listed by part number in ascending alphanumeric sequence (i.e., vertical arrangement of letter and number combination which places the first letter or digit of each group in order A through Z, followed by the numbers 0 through 9 and each following letter or digit in like order).

(1) **FSCM column.** The Federal Supply Code for Manufacturer (FSCM) is a 5-digit numeric code used to identify the manufacturer, distributor, or Government agency, etc., that supplies the item.

(2) **PART NUMBER column.** Indicates the primary number used by the manufacturer (individual, firm, corporation, or Government activity), which controls the design and characteristics of the item by means of its engineering drawings, specifications standards, and inspection requirements to identify an item or range of items.

(3) **STOCK NUMBER column.** This column lists the NSN for the associated part number and manufacturer identified in the PART NUMBER and FSCM columns to the left.

(4) **FIG. column.** This column lists the number of the figure where the item is identified/located in Sections II and III.

(5) **ITEM column.** The item number is that number assigned to the item as it appears in the figure referenced in adjacent figure number column.

c. **FIGURE AND ITEM NUMBER INDEX.**

(1) **FIG. column.** This column lists the number of the figure where the item is identified/located in Section II and III.

(2) **ITEM column.** The item number is that number assigned to the item as it appears in the figure referenced in the adjacent figure number column.

(3) **STOCK NUMBER column.** This column lists the NSN for the item.

(4) **FSCM column.** The Federal Supply Code for Manufacturer (FSCM) is a 5-digit numeric code used to identify the manufacturer, distributor, or Government agency, etc., that supplies the item.

(5) **PART NUMBER column.** Indicates the primary number used by the manufacturer (individual, firm, corporation, or Government activity), which controls the design and characteristics of the item by means of its engineering drawings, specifications standards, and inspection requirements to identify an item or range of items.

5. SPECIAL INFORMATION.

a. USABLE ON CODE. The usable on code appears in the lower left corner of the Description column heading. Usable on codes are shown as "UOC:" in the Description Column (justified left):on the last line applicable item description/ nomenclature. Uncoded items are applicable to all models.

b. ASSOCIATED PUBLICATIONS. The publications listed below pertains to the Compressor, Air Reciprocating, and its components.

Publication	Short Title
TM 5-4310-360-14	Compressor Air, Reciprocating: 175 PSI
LO 5-4310-358-12	Lubrication Order for Compressor, Air, Reciprocating: 175 PSI

6. HOW TO LOCATE REPAIR PARTS.

a. When National Stock Number or Part Number is NOT Known.

- (1) **First.** Using the table of contents, determine the assembly group for subassembly group to which the item belongs. This is necessary since figures are prepared for assembly groups and subassembly groups, and listings are divided into the same groups.
- (2) **Second.** Find the figure covering the assembly group or subassembly group to which the item belongs.
- (3) **Third.** Identify the item on the figure and note the item number.
- (4) **Fourth.** Refer to the Repair Parts List for the figure to find the part number for the item number noted on the figure.
- (5) **Fifth.** Refer to the Part Number Index to find the NSN, if assigned.

b. When National Stock Number or Part Number is Known:

- (1) **First.** Using the Index of National Stock Numbers and Part Numbers, find the pertinent National Stock Number or Part Number. The NSN index is in National Item Identification Number (NIIN) sequence (see 4a(1)). The part numbers in the Part Number index are listed in ascending alphanumeric sequence (see paragraph 4b). Both indexes cross-reference you to the illustration figure and item number of the item you are looking for.
- (2) **Second.** After finding the figure and item number, verify that the item is the one you are looking for, then locate the item number in the repair parts list for the figure.

7. ABBREVIATIONS. Abbreviations used in this manual are listed in MIL-STD-12.

1
2 THRU 12

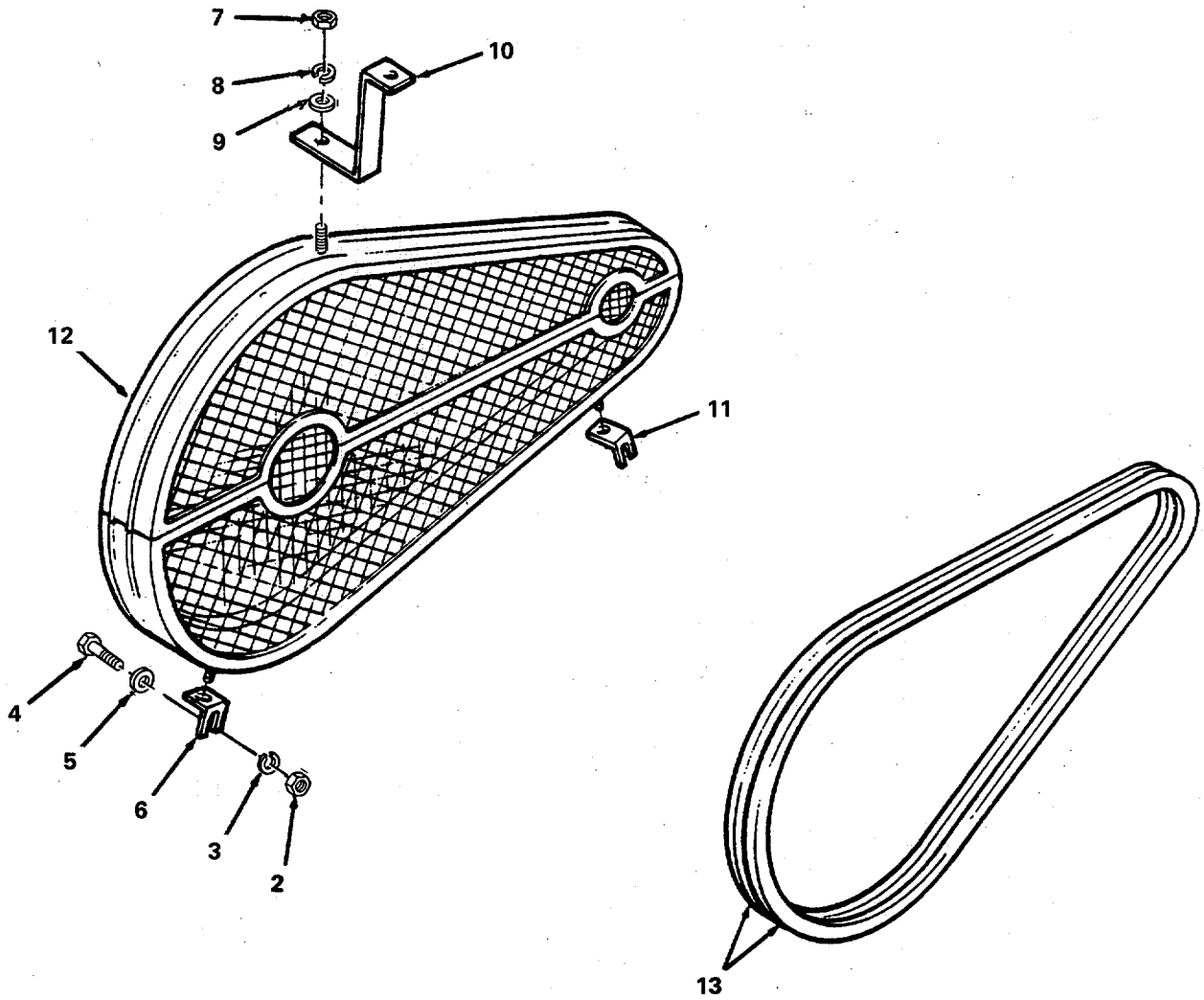


Figure 1. Belt Guard Assembly.

SECTION II					
(1)	(2)	(3)	(4)	(5)	(6)
ITEM NO	SMR CODE	FSCM	PART NUMBER	DESCRIPTION AND USABLE ON CODES(UOC)	QTY
GROUP 01 GUARD					
FIG. 1 BELT GUARD ASSEMBLY					
1	XBOOO	11568	Z307	GUARD ASSY BELT	1
2	PAOZZ	11568	M939A	.NUT, PLAIN, HEXAGON	4
3	PAOZZ	96906	MS35338-44	.WASHER, LOCK.....	4
4	PAOZZ	96906	MS90725-6	.SCREW, CAP, HEXAGON H.....	4
5	PAOZZ	96906	MS27183-4	.WASHER, FLAT.....	4
6	XBOOO	11568	M856	.BRACKET BELT GUARD	1
7	PAOZZ	11568	M935A	.NUT, PLAIN, HEXAGON	7
8	XDOZZ	11568	M913A	.WASHER, LOCK.....	7
9	PAOZZ	27315	3612V004	.WASHER, FLAT.....	8
10	XBOOO	11568	M855	.BRACKET BELT GUARD	1
11	XBOOO	11568	M854	.BRACKET BELT GUARD	1
12	XBOOO	11568	Z307-1	.GUARD BELT	1
13	PAOZZ	24161	A63-2 MATCHED SE T	BELTS, V, MATCHED SET	2

END OF FIGURE

2
3 THRU 23

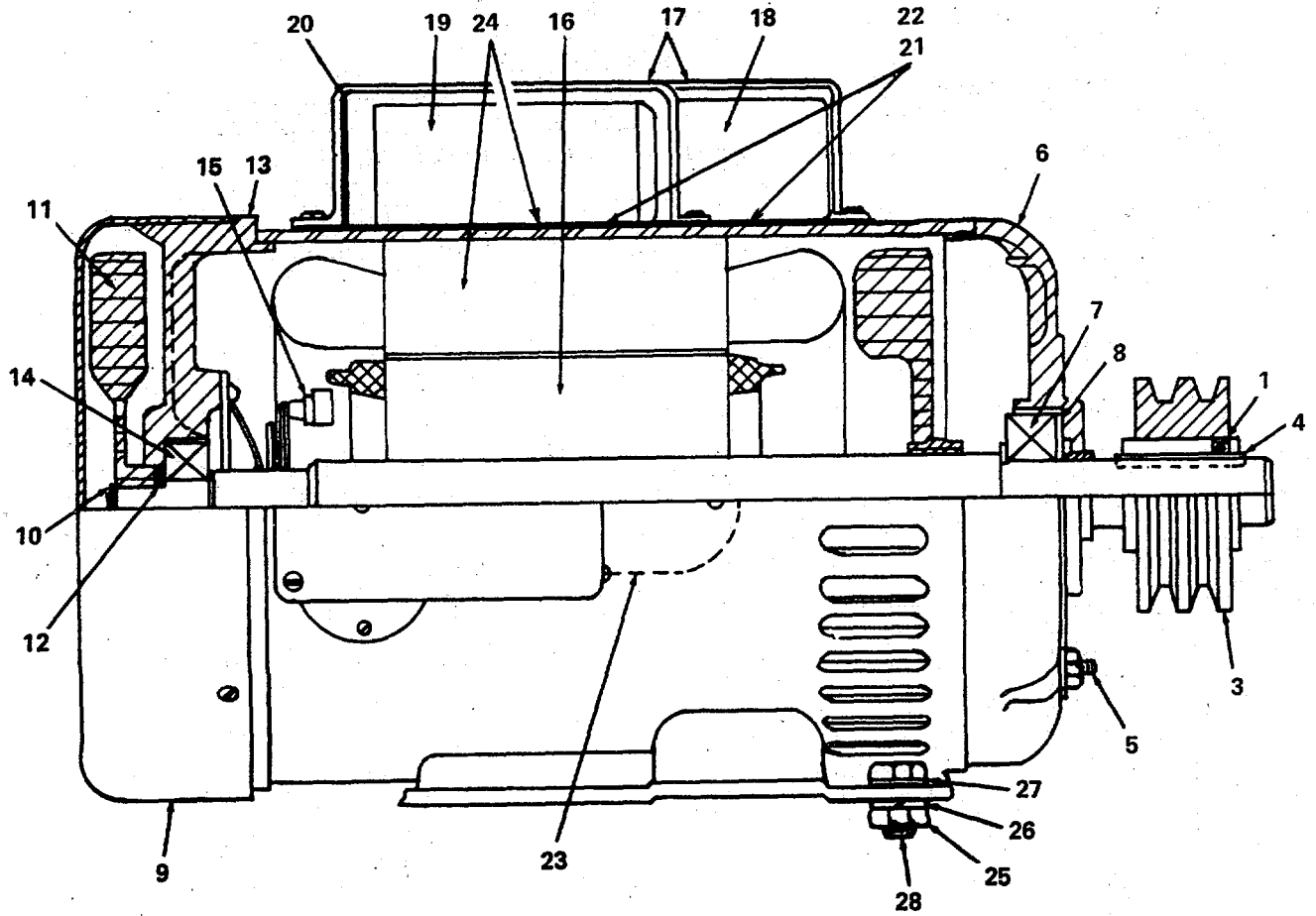


Figure 2. Electric Motor.

SECTION II

(1) ITEM NO	(2) SMR CODE	(3) FSCM	(4) PART NUMBER	(5) DESCRIPTION AND USABLE ON CODES(UOC)	(6) QTY
GROUP 02 ELECTRIC MOTOR & RELATED PARTS					
FIG.2 ELECTRIC MOTOR					
1	PAOZZ	36422	1X485	SETSCREW.....	1
2	PBOFZ	11568 P-	4824A	MOTOR, ALTERNATING C.....	1
3	PBOZZ	11568	M5207C	PULLEY, GROOVE.....	1
4	XBFZZ	92940	23A027410600	.KEY.....	1
5	XBFZZ	92940	19A012545100	.BOLT THRU.....	4
6	XBFZZ	92940	07C022210412	.END SHIELD FRONT.....	1
7	PBFZZ	92940	04A091010200	.BEARING, BALL, ANNULA.....	1
8	XBFZZ	92940	22A022920200	.SPRING WAVY.....	1
9	XBFZZ	92940	11B037270100	.FAN GUARD.....	1
10	XBFZZ	92940	24A092850300	.LOCKRING.....	1
11	XBFZZ	92940	12B037260100	.FAN ASSY.....	1
12	XBFZZ	92940	28A093170100	.SPACER.....	1
13	XBFZZ	92940	76B507015820	.END SHIELD REAR.....	1
14	XBFZZ	92940	04A091230100	.BEARING.....	1
15	PAFZZ	92940	17A025100800	.SWITCH, CENTRIFUGAL.....	1
16	XBFZZ	92940	93B240616012	.ROTOR + SHAFT ASSY.....	1
17	XBFZZ	92940	16B045990100	.CASE CAPACITOR.....	2
18	PAFZZ	92940	15A088402000	.CAPACITOR.....	1
19	XBFZZ	92940	93A118524002	.CAPACITOR.....	1
20	XBFZZ	92940	21A021180300	.INSULATION.....	1
21	XBFZZ	92940	29A082870100	.GASKET.....	1
22	XBFZZ	92940	29A093280100	.GASKET.....	2
23	XBOZZ	92940	20B046020100	.NAME PLATE.....	1
24	XAFZZ	92940	93B211564002	.STATOR ASSY W/ BASE.....	1
25	PAOZZ	11568	M935A	NUT, PLAIN, HEXAGON.....	7
26	XDOZZ	96906	MS35338-45	WASHER, LOCK.....	7
27	PAOZZ	96906	MS27183-11	WASHER, FLAT.....	8
28	PAFZZ	96906	MS90725-34	BOLT, MACHINE.....	4

END OF FIGURE

1
2 THRU 16

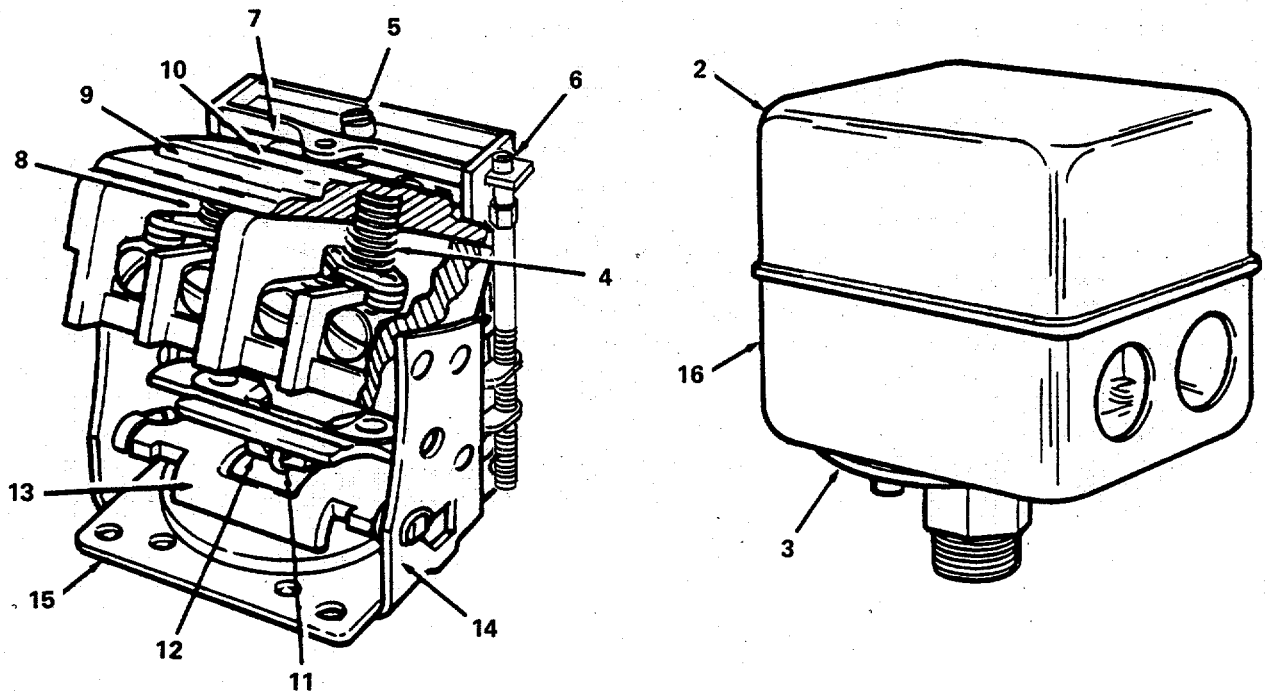


Figure 3. Switch Assembly, Pressure.

SECTION II

(1) ITEM NO	(2) SMR CODE	(3) FSCM	(4) PART NUMBER	(5) DESCRIPTION AND USABLE ON CODES(UOC)	(6) QTY
GROUP 02 ELECTRIC MOTOR & RELATED PARTS					
FIG. 3 SWITCH ASSEMBLY, PRESSURE					
1	PAFFZ	23826	69HA1	SWITCH, PRESSURE.....	1
2	XDFZZ	23826	D9943-10	.COVER ENCLOSURE COM.....	1
3	XDFZZ	23826	D274-1	.DIAPHRAGM, ELECTRICA	1
4	XDFZZ	23826	D467-1	.SPRING, HELICAL, COMP	1
5	XDFZZ	23826	D323-1	.SCREW, PRESS.....	1
6	XDFZZ	23826	D9096-1	.SCREW AND NUT	1
7	XBFZZ	23826	D9935-1	.BAR TOP	1
8	XBFZZ	23826	D1673-1	.BOARD ASSY CONTACT	1
9	PBFZZ	23826	D276-1	.SPRING	1
10	XDFZZ	23826	D10037-1	.SPRING	1
11	XDFZZ	23826	D357-1	.SPRING, HELICAL, EXTE.....	1
12	XDFZZ	23826	D317-2	.TOGGLE BAR	1
13	XBFZZ	23826	D1366-1	.LEVER	1
14	XDFZZ	23826	D10456-1	.PLATE, DIAPHRAGM.....	1
15	XBFZZ	23826	D9078-1	.FRAME COMPLETE	1
16	XBFZZ	23826	D9271-15	.ENCLOSURE	1

END OF FIGURE

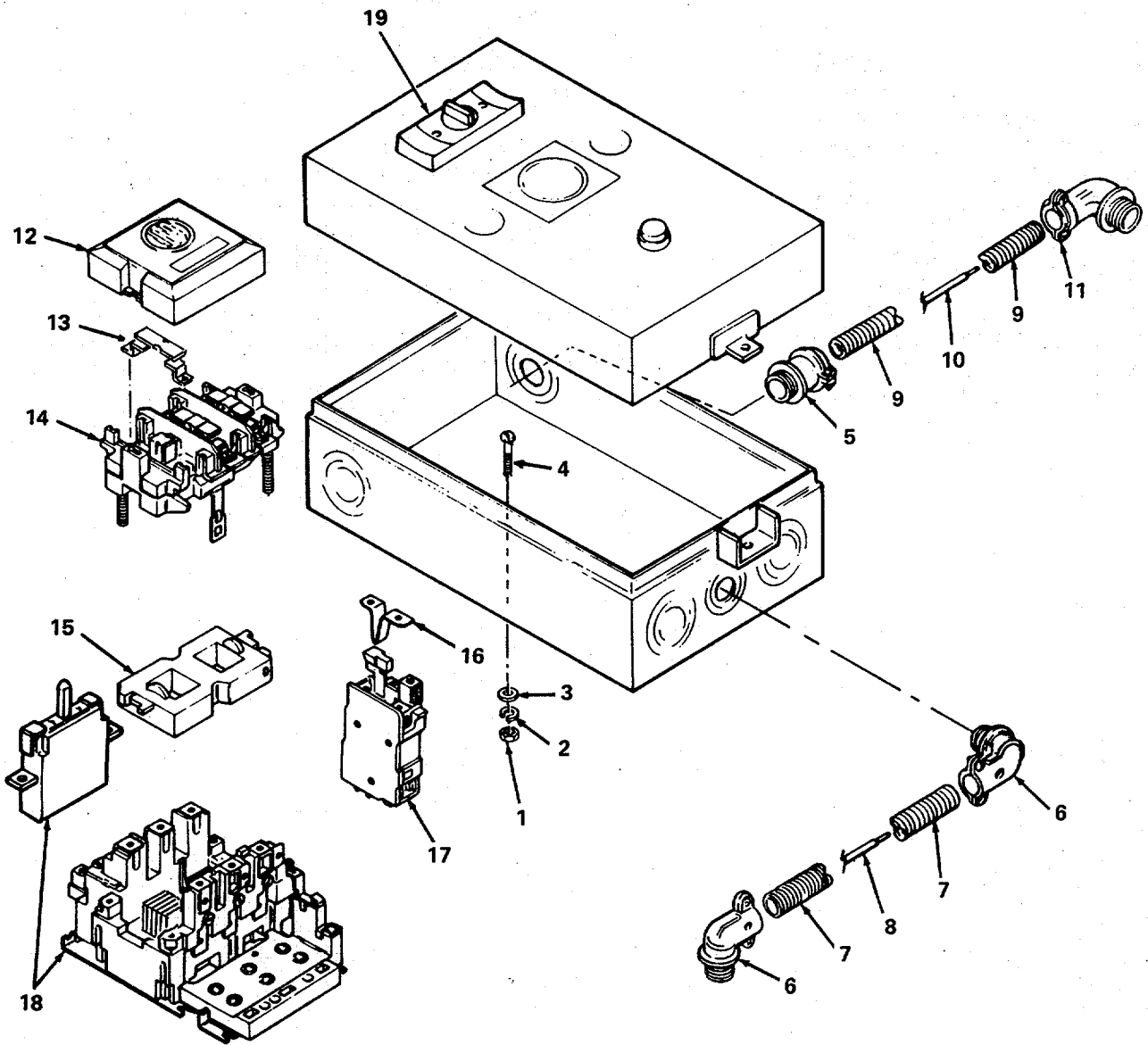


Figure 4. Starter Assembly.

SECTION II					
(1)	(2)	(3)	(4)	(5)	(6)
ITEM NO	SMR CODE	FSCM	PART NUMBER	DESCRIPTION AND USABLE ON CODES(UOC)	QTY
GROUP 02 ELECTRIC MOTOR & RELATED PARTS					
FIG. 4 STARTER ASSEMBLY					
1	PAOZZ	96906	MS35649-2252	NUT, PLAIN, HEXAGON	4
2	PAOZZ	96906	MS35338-44	WASHER, LOCK.....	4
3	PAOZZ	96906	MS27183-4	WASHER, FLAT.....	4
4	PAOZZ	96906	MS90725-6	SCREW, CAP, HEXAGON H.....	4
5	XBOZZ	11568	M1757	CONNECTOR CONDUIT	1
6	XBOZZ	11568	M1606	CONNECTOR CONDUIT	2
7	XBOZZ	11568	P4640A	CONDUIT FLEXIBLE.....	1
8	XBOZZ	11568	14TWX32	WIRE 14 GAUGE 32 IN.....	2
9	XBOZZ	11568	P4132A	CONDUIT FLEXIBLE.....	1
10	XBOZZ	11568	14TWX37	WIRE 14 GAUGE 37 IN.....	2
11	XBOZZ	11568	M1883	CONNECTOR CONDUIT	2
12	XBFZZ	52090	G213C	.CAP CONTACT COVER	1
13	XBFZZ	52090	G203C	.KIT CONTACT	1
14	XBFZZ	52090	G223C	.CARRIER ASSY CONT	1
15	PAFZZ	52090	G10C246	.COIL.....	1
16	PAFZZ	30086	G3T0351	.COIL, ELECTRICAL	1
17	XBFZZ	52090	E20COL1	.RELAY, ELECTRICAL.....	1
18	XBFZZ	30086	F11NOC	.RELAY, ELECTRICAL.....	1
19	XBFZZ	52090	E11ESS	.SWITCH SELECTOR.....	1

END OF FIGURE

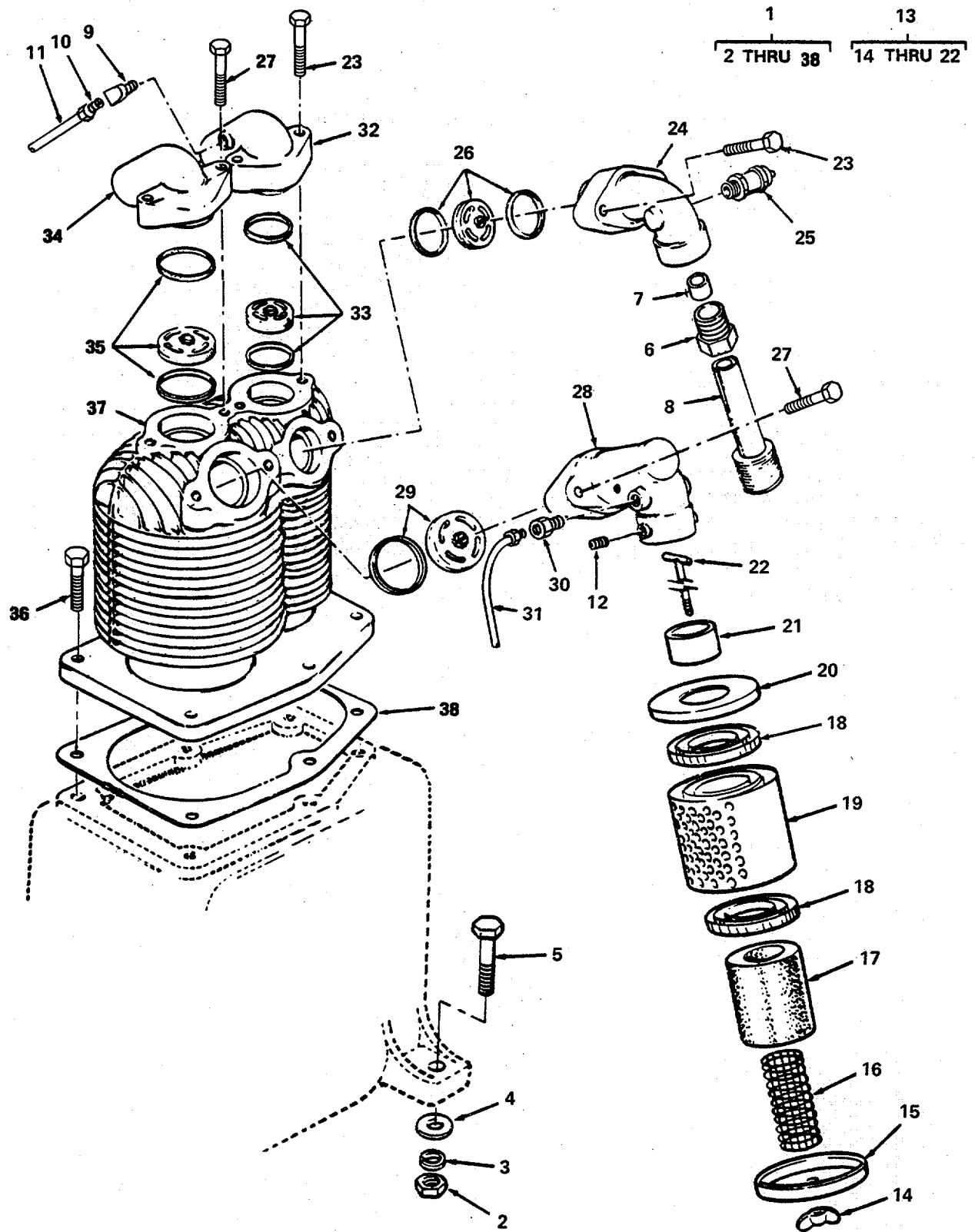


Figure 5. Compressor Assembly.

SECTION II

(1) ITEM NO	(2) SMR CODE	(3) FSCM	(4) PART NUMBER	(5) DESCRIPTION AND USABLE ON CODES(UOC)	(6) QTY
GROUP 03 AIR COMPRESSOR ASSEMBLY					
FIG. 5 COMPRESSOR ASSEMBLY					
1	PBOFF	11568	R-10-C	COMPRESSOR, RECIPROC	1
2	PAOZZ	11568	M909A	NUT, PLAIN, HEXAGON	4
3	XDOZZ	96906	MS35338-46	WASHER, LOCK.....	4
4	PAFZZ	11568	SE5-88	WASHER, FLAT.....	4
5	XDFZZ	96906	MS90725-64	SCREW, CAP, HEXAGON H.....	4
6	PAFZZ	11568	SE541	INVERTED NUT, TUBE C	2
7	PAOZZ	06853	203897	.SLEEVE, COMPRESSION	2
8	XBOZZ	11568	RE4-12A	.TUBE INTERCOOLER	1
9	XDOZZ	11568	Z513	.ELBOW, PIPE TO TUBE.....	1
10	PBOZZ	81343	SAE512I	.ELBOW, PIPE TO TUBE.....	1
11	XBOZZ	11568	SB250A	.TUBE ASSEMBLY, METAL.....	1
12	PAOZZ	11568	M432	.SETSCREW.....	1
13	XBOOO	11568	Z66A	.MUFFLER ASSY.....	1
14	PAOZZ	11568	M1712	..NUT, PLAIN, WING.....	1
15	XBFZZ	11568	M30A	..COVER LOWER	1
16	PAOZZ	11568	M674	..FILTER ELEMENT, FLUI.....	1
17	PBOZZ	11568	M673	..FILTERING PAD, AIR C.....	1
18	XBOZZ	11568	M62	..SEPARATOR MUFFLER.....	2
19	XBOZZ	11568	M54C	..PLATE MUFFLER	1
20	XBOZZ	11568	M31A	..COVER UPPER MUFFLER.....	1
21	XBOZZ	11568	M32A	..FERRULE MUFFLER	1
22	XBOZZ	11568	M1711	..T STUD MUFFLER.....	1
23	PAOZZ	11568	M1737	.SCREW, CAP, HEXAGON H.....	4
24	XBFZZ	11568	SE5-2B	.ELBOW, FLANGE TO TUB	1
25	PAOZZ	75336	125 1-4 75PSI	.VALVE, SAFETY RELIEF.....	1
26	PAOZZ	11568	Z113	.VALVE ASSEMBLY, INLE	1
27	PBOZZ	96906	MS90725-65	.SCREW, CAP, HEXAGON H.....	4
28	XBOZZ	11568	R10B2	.ELBOW, FLANGE TO TUB	1
29	PAOZZ	11568	Z812	.CARTRIDGE, SUCTION V	1
30	PAOZZ	96906	MS39169-15	.ADAPTER, STRAIGHT, PI	2
31	XBOZZ	11568	UB375	.TUBE BREATHER	1
32	XBOZZ	11568	NR2B	.MANIFOLD, COMPRESSOR	1
33	PAOZZ	11568	Z115	.VALVE ASSEMBLY, DISC	1
34	XBOZZ	11568	RE10-2E	.ELBOW, FLANGE TO TUB	1
35	PAOZZ	11568	Z813	.PARTS KIT, COMPRESSO.....	1
36	XDOZZ	11568	M817	.CAP SCR HEX HD 7/16	6
37	XBFFH	11568	NR14-6A	.CYLINDER	1
38	PAHZZ	11568	NR29A	.GASKET.....	1

END OF FIGURE

20
21 THRU 23

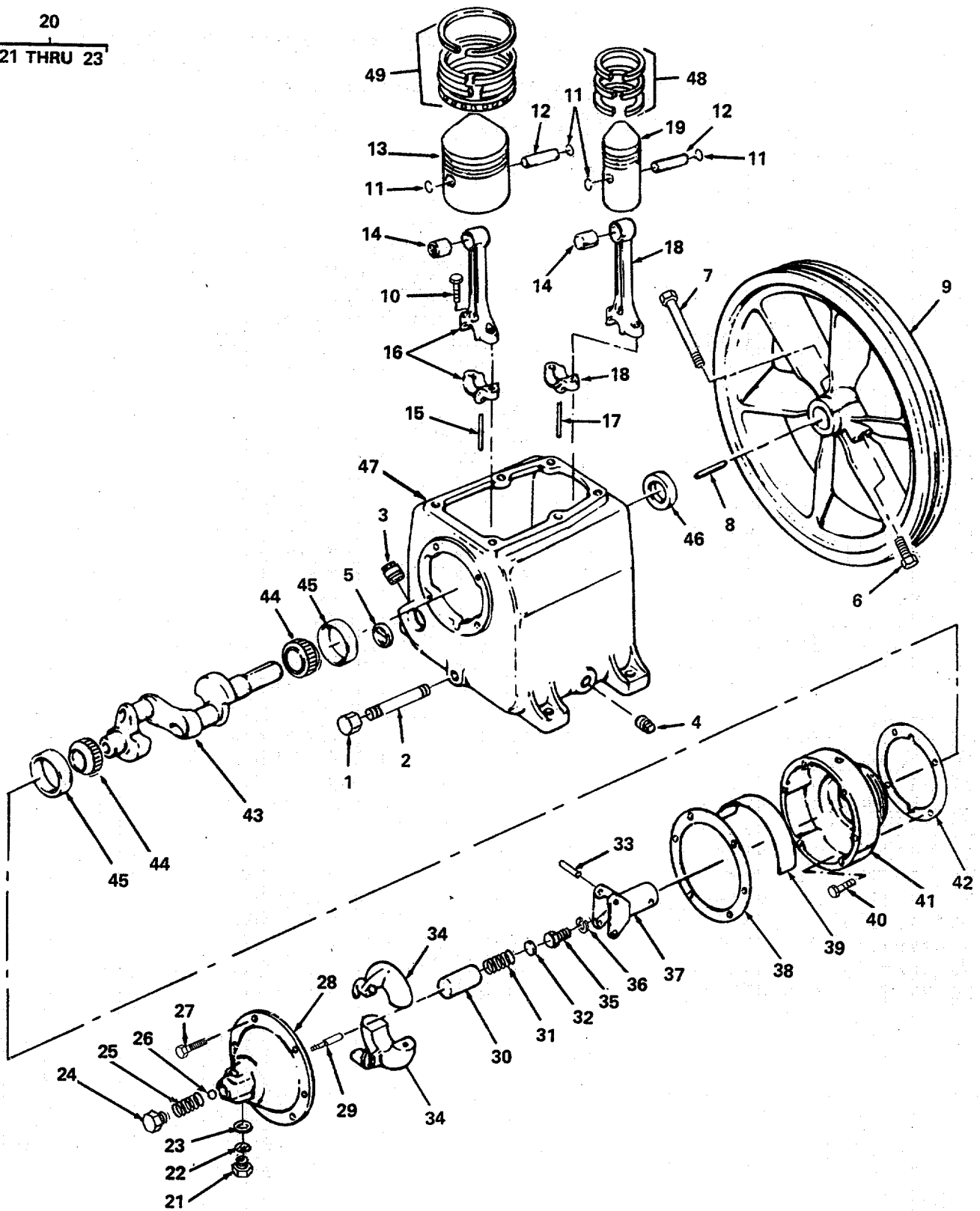


Figure 6. Crankcase.

SECTION II

(1) ITEM NO	(2) SMR CODE	(3) FSCM	(4) PART NUMBER	(5) DESCRIPTION AND USABLE ON CODES(UOC)	(6) QTY
GROUP 03 COMPRESSOR ASSEMBLY					
FIG. 6 CRANKCASE					
1	PAOZZ	11568	M461	.CAP, PIPE.....	1
2	PAOZZ	11568	M492	.NIPPLE, PIPE	1
3	XBFZZ	11568	M459	.PLUG PIPE 3/4 IN.....	1
4	PAOZZ	96906	MS51884-3	.PLUG, PIPE	2
5	PAOZZ	11568	RE7-14	.INDICATOR, SIGHT, LIQ	1
6	XDOZZ	11568	M-465	.NUT, FLYWHEEL.....	1
7	PAOZZ	96906	MS90728-123	.SCREW, CAP, HEXAGON H.....	1
8	XDOZZ	11568	SE5-8	.KEY FLYWHEEL.....	1
9	XBOZZ	11568	NR7A	.FLYWHEEL COMPRESSOR.....	1
10	XBFZZ	11568	M1583	.BOLT CONNECTING ROD	4
11	XBFZZ	11568	R10-102	.RING PISTON PIN RET	4
12	XBFZZ	11568	R10-21	.PIN, STRAIGHT, HEADLE	2
13	XBFZZ	11568	R15-4	.PISTON, COMPRESSOR	1
14	PAFZZ	11568	RE10-37	.BUSHING, SLEEVE	2
15	XBFZZ	11568	R10-24	.OIL DIPPER	1
16	XBFZZ	11568	M1582	.CONNECTING ROD ASSY	1
17	XBFZZ	11568	R30-24	.OIL DIPPER	1
18	XBFZZ	11568	M1581	.ROD CONNECTING ASSY	1
19	XBFZZ	11568	R10-4	.PISTON ASSY	1
20	XBOZZ	11568	Z60A	.BREATHER.....	1
21	XAOZZ	11568	M1046	..BODY MUFFLER	1
22	XDOZZ	11568	M97A	..SCREEN, MUFFLER, COMP	1
23	XAOZZ	11568	M98A	..FELT MUFFLER.....	1
24	XBOZZ	11568	NR101	.BODY RELEASE VALVE.....	1
25	XBOZZ	11568	SE5-91	.SPRING, HELICAL, COMP	1
26	PAOZZ	96906	M519060-4814	.BALL, BEARING.....	1
27	PAFZZ	11568	SE14-84	.SCREW, MACHINE.....	6
28	XBOZZ	11568	RE10-100A	.COVER GOV HOUSING	1
29	XBFZZ	11568	SE5-86B	.PLUNGER, DETENT	1
30	XBFZZ	11568	SE5-87	.RETAINER, HELICAL CO	1
31	PAFZZ	11568	SE5-90	.SPRING, HELICAL, COMP	1
32	PAOZZ	27315	3612V004	.WASHER, FLAT.....	8
33	PAFZZ	11568	SE5-92A	.PIN, SPRING.....	2
34	PAFZZ	11568	SE5-82A	.WEIGHT GOVERNOR	2
35	XDFZZ	11568	SE5-94	.SCREW CAP HEX HEAD.....	1
36	XDFZZ	12603	4E07J	WASHER, LOCK.....	1
37	PAFZZ	11568	SE5-83B	.SPINDLE GOVERNOR	1
38	PAFZZ	11568	SE14-89	.GASKET.....	1
39	XBFZZ	11568	NR104	.PLATE BAFFLE	1
40	PAFZZ	96906	MS18154-60	.SCREW, CAP, HEXAGON H.....	4
41	XBFZZ	11568	NR80A	.HOUSING GOVERNOR	1
42	PAFZZ	11568	SE14-30A	.GASKET.....	1
42	PAFZZ	11568	SE14-30B	.GASKET.....	1
42	PAFZZ	11568	SE14-30C	.GASKET.....	1
42	PAFZZ	11568	SE14-30	.GASKET.....	1
43	XBFZZ	11568	R10-5	.CRANKSHAFT	1
44	PAFZZ	60038	14138A	.CONE AND ROLLERS, TA.....	2
45	PAFZZ	60038	14276	.CUP, TAPERED ROLLER	2

SECTION II

(1) ITEM NO	(2) SMR CODE	(3) FSCM	(4) PART NUMBER	(5) DESCRIPTION AND USABLE ON CODES(UOC)	(6) QTY
46	XDFZZ	11568	OS-N4	.SEAL, PLAIN ENCASED	1
47	XBFZZ	11568	M1820	.CRANKCASE	1
48	PAFZZ	11568	Z189B	.RING SET, PISTON	1
49	PAFZZ	11568	Z179C	.RING SET, PISTON	

END OF FIGURE

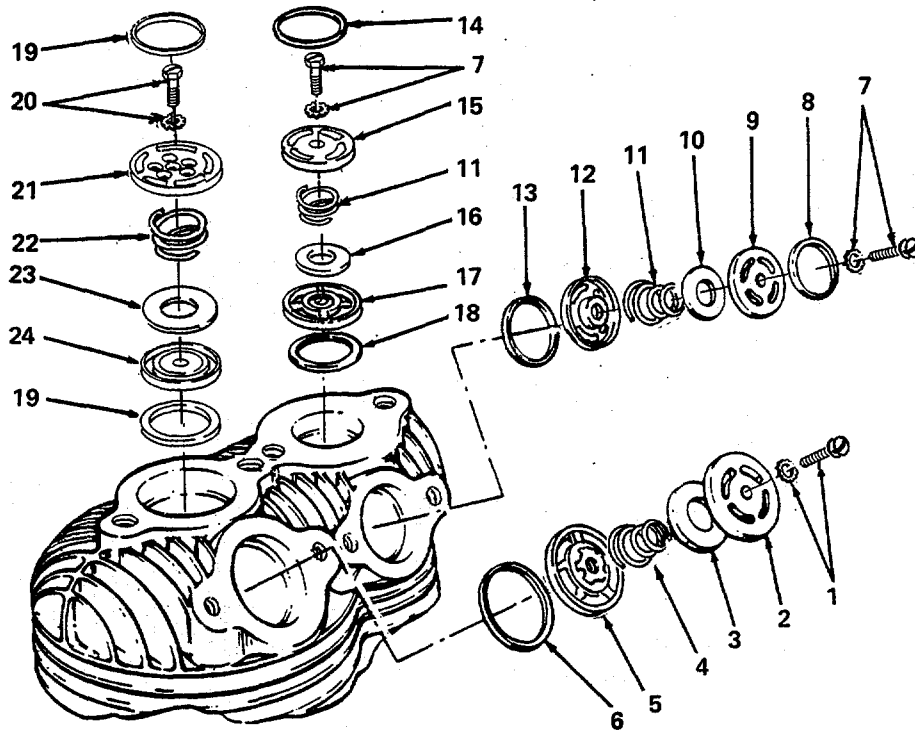


Figure 7. Valve Assembly.

SECTION II

(1) ITEM NO	(2) SMR CODE	(3) FSCM	(4) PART NUMBER	(5) DESCRIPTION AND USABLE ON CODES(UOC)	(6) QTY
GROUP 03 COMPRESSOR ASSEMBLY					
FIG. 7 VALVE ASSEMBLY					
1	PBOZZ	11568	P-4544A	..SCREW, ASSEMBLED WAS	1
2	XADZZ	11568	RE14-71A	..SEAT, VALVE	1
3	XAOZZ	11568	RE14-70	..WASHER, FLAT.....	1
4	XAOZZ	11568	RE14-58	..SPRING, HELICAL, COMP	1
5	XAOZZ	11568	M2098	..CAGE VALVE INTAKE	1
6	XAOZZ	11568	P4134A	..GASKET.....	1
7	XDFZZ	11568	M1122	..MSCR FILH 10-32X3/8	2
8	XAOZZ	11568	P4137A	..GASKET.....	4
9	XAOZZ	11568	RE7-56A	..SEAT VALVE INTAKE	1
10	XAOZZ	11568	RE10-62	..WASHER, FLAT.....	1
11	XAOZZ	11568	RE7-60	..SPRING, HELICAL, COMP	3
12	XBOZZ	11568	M2101	..CAGE VALVE INTAKE	1
13	XDOZZ	79150	2203 TYPE A	..GASKET VALVE	1
14	XAOZZ	11568	P4137A	..GASKET.....	2
15	XAOZZ	11568	M2100	..CAGE VALVE EXHAUST	1
16	XAOZZ	11568	RE10-62	..WASHER, FLAT.....	2
17	XAOZZ	11568	RE7-57A	..SEAT EXHAUST VALVE	1
18	XDOZZ	79150	2203 TYPE A	..GASKET VALVE	1
19	XAOZZ	11568	P4135A	..GASKET.....	3
20	XAOZZ	11568	P-4543A	..MSCR FILH 10-32	1
21	XAOZZ	11568	M2099	..CAGE, VALVE EXHAUST	1
22	XAOZZ	11568	RE10-59	..SPRING, HELICAL, COMP	1
23	XDOZZ	11568	RE10-61	..WASHER, FLAT.....	1
24	XAOZZ	11568	M2097	..SEAT VALVE EXHAUST	1

END OF FIGURE

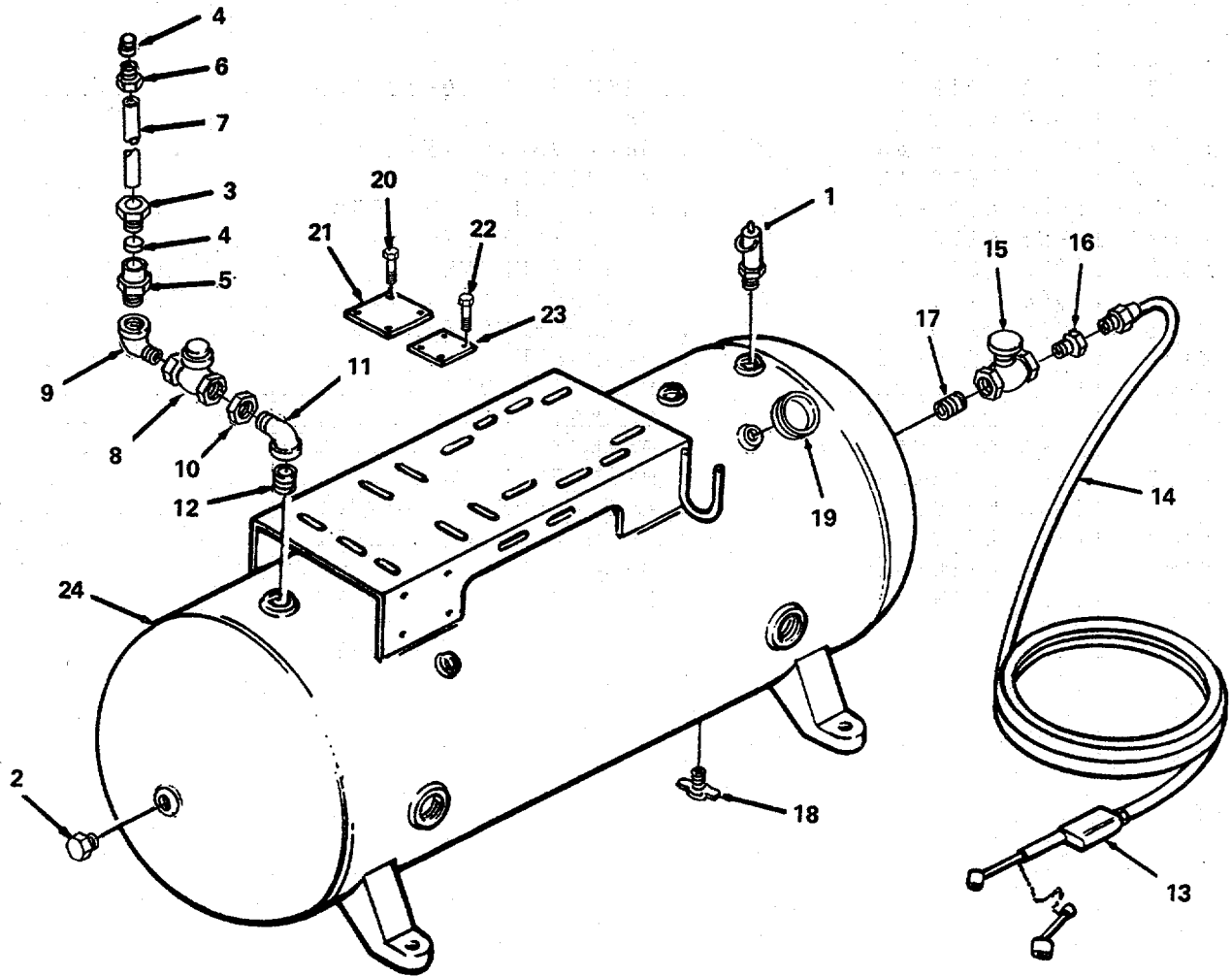


Figure 8. Air Receiver Tank and Parts.

SECTION II

(1) ITEM NO	(2) SMR CODE	(3) FSCM	(4) PART NUMBER	(5) DESCRIPTION AND USABLE ON CODES(UOC)	(6) QTY
GROUP 04 AIR RECEIVER					
FIG. 8 AIR RECEIVER TANK AND PARTS					
1	XDOZZ	75336	112C 1/4 175	VALVE SAFETY.....	1
2	PAOZZ	96906	MS51884-7H	PLUG, PIPE	1
3	XBFZZ	11568	SE541	PACKING NUT.....	2
4	PAOZZ	11568	S3542	SLEEVE, COMPRESSION.....	4
5	PAOZZ	11568	RE10-99	ADAPTER, STRAIGHT, PI.....	1
6	XBOZZ	11568	SE541	PACKING NUT.....	2
7	XBFZZ	11568	NR1H	TUBE ASSEMBLY, METAL.....	1
8	PAOZZ	11568	Z57C	VALVE, CHECK.....	1
9	XBOZZ	11568	M1296	ELBOW STREET 3/4 IN.....	2
10	XBOZZ	11568	M1629	BUSHING FACE.....	1
11	XBOZZ	11568	M982B	ELBOW STREET 1/2 IN.....	1
12	XBOZZ	11568	M1029B	NIPPLE CLOSE 1/2 X.....	21
13	XDOZZ	94894	61J21506	GAGE INFLATOR.....	1
14	PAOZZ	11568	Z538A	HOSE ASSEMBLY, NONME.....	1
15	PAOOZ	11568	M523	VALVE, GLOBE.....	1
16	PAOZZ	96906	MS14315-5X	BUSHING, PIPE.....	1
17	XBOZZ	96906	MS51953-73	NIPPLE, PIPE.....	1
18	PAOZZ	92976	1825A	COCK, DRAIN.....	1
19	PAOZZ	61349	050755	GAGE, PRESSURE, DIAL.....	1
20	PAOZZ	96906	MS21318-21	SCREW, DRIVE.....	4
21	XDFZZ	11568	M811	PLATE, INSTRUCTION.....	1
22	XDFZZ	11568	M835	SCREW.....	4
23	XBFZZ	11568	P4827A	PLATE IDENT.....	1
24	XBFZZ	11568	P4644D	AIR RECEIVER ASME.....	1

END OF FIGURE

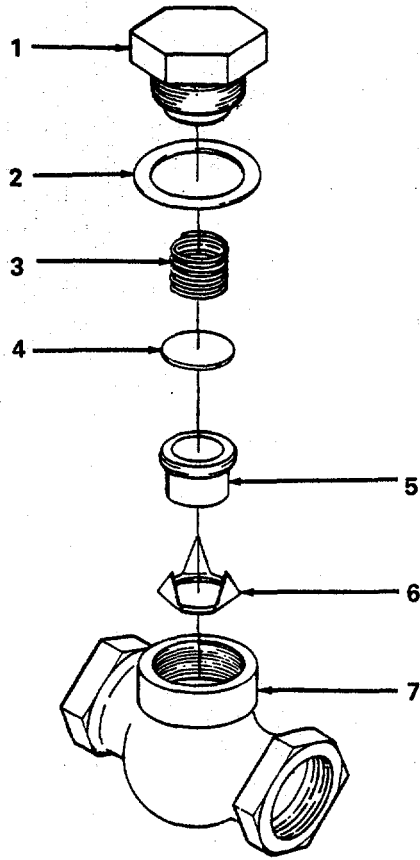


Figure 9. Check Valve.

SECTION II

(1) ITEM NO	(2) SMR CODE	(3) FSCM	(4) PART NUMBER	(5) DESCRIPTION AND USABLE ON CODES(UOC)	(6) QTY
-------------------	--------------------	-------------	-----------------------	---	------------

GROUP 04 CHECK VALVE

FIG. 9 CHECK VALVE

1	XAOZZ	11568	M1668	CAP.....	1
2	XDOZZ	11568	P3831A	GASKET.....	1
3	XAOZZ	11568	M453A	SPRING.....	1
4	XAOZZ	11568	M1102	DISC VALVE.....	1
5	KFFZZ	11568	MI100	SEAT VALVE.....	1
6	KFFZZ	11568	M1099	GUIDE VALVE.....	1
7	KFFZZ	11568	M1875	BODY VALVE CHECK.....	1

END OF FIGURE

Section III. SPECIAL TOOLS LIST

(Not Applicable)

CROSS REFERENCE INDEXES

NATIONAL STOCK NUMBER INDEX

STOCK NUMBER	FIG	ITEM	STOCK NUMBER	FIG	ITEM
5310-00-007-9869	1	9	4820-00-849-1220	8	18
	6	32	5360-00-850-5541	6	31
5305-00-068-0502	1	4	4730-00-850-7971	5	6
	4	4	2990-00-863-0926	6	37
5305-00-071-2079	6	7	4720-00-874-3179	8	14
5930-00-087-4027	3	1	4310-00-896-2105	6	34
3110-00-100-0516	6	45	5305-00-942-2196	6	40
3110-00-100-3150	6	44	5310-00-950-1310	1	5
4730-00-103-5461	8	5		4	3
5305-00-151-6876	6	27	5310-00-997-1888	4	1
5315-00-168-2969	6	33	5310-01-005-4336	5	14
4730-00-187-4207	6	4	5305-01-011-3072	5	12
4730-00-188-1870	6	2	5330-01-014-4308	6	42
3110-00-198-1050	6	26	5330-01-014-4309	6	42
4310-00-204-9681	5	16	4820-01-014-4402	8	8
4730-00-213-0651	6	1	5305-01-015-3345	2	1
5310-00-224-0765	5	4	5310-01-017-3842	1	7
5306-00-225-8499	2	28		2	25
5305-00-253-5615	8	20	6110-01-021-2636	4	15
5305-00-269-3215	5	27	5360-01-040-3845	3	9
4730-00-273-8561	5	30	5305-01-064-6251	7	1
4730-00-277-1896	8	16	3030-01-104-1531	1	13
4730-00-277-7621	5	10	5910-01-104-8896	2	18
4730-00-277-9741	5	7	5930-01-105-3520	2	15
	8	4	5950-01-105-7161	4	16
5305-00-331-4856	5	23	6105-01-112-1008	2	2
4130-00-351-7387	5	17			
6680-00-377-4915	6	5			
4820-00-403-4658	8	15			
4820-00-421-6984	5	25			
6685-00-425-2373	8	19			
4310-00-430-3488	5	1			
5310-00-448-7227	1	2			
5330-00-450-4130	5	38			
3110-00-533-9592	2	7			
5310-00-582-5965	1	3			
	4	2			
5330-00-585-4283	6	38			
5330-00-585-9950	6	42			
4310-00-631-3396	5	33			
4820-00-631-3397	5	26			
4310-00-631-3398	5	35			
4820-00-631-3399	5	29			
5330-00-633-6114	6	42			
4310-00-649-8398	6	48			
5310-00-655-9544	5	2			
4310-00-773-7986	6	49			
5310-00-809-3078	2	27			
3120-00-811-6046	6	14			
3020-00-837-1270	2	3			

CROSS REFERENCE INDEXES

PART NUMBER INDEX

FSCM	PART NUMBER	STOCK NUMBER	FIG	ITEM
24161	A63-2 MATCHED SE T	3030-01-104-1531	1	13
23826	D10037-1		3	10
23826	D10456-1		3	14
23826	D1366-1		3	13
23826	D1673-1		3	8
23826	D274-1		3	3
23826	D276-1	5360-01-040-3845	3	9
23826	D317-2		3	12
23826	D323-1		3	5
23826	D357-1		3	11
23826	D467-1		3	4
23826	D9078-1		3	15
23826	D9096-1		3	6
23826	D9271-15		3	16
23826	D9935-1		3	7
23826	D9943-10		3	2
52090	E11ESS		4	19
52090	E20COL1		4	17
30086	F11NOC		4	18
52090	G10C246	6110-01-021-2636	4	15
52090	G203C		4	13
52090	G213C		4	12
52090	G223C		4	14
30086	G3T0351	5950-01-105-7161	4	16
11568	M-465		6	6
96906	MS14315-5X	4730-00-277-1896	8	16
96906	MS18154-60	5305-00-942-2196	6	40
96906	MS19060-4814	3110-00-198-1050	6	26
96906	MS21318-21	5305-00-253-5615	8	20
96906	MS27183-11	5310-00-809-3078	2	27
96906	MS27183-4	5310-00-950-1310	1	5
			4	3
96906	MS35338-44	5310-00-582-5965	1	3
			4	2
96906	MS35338-45		2	26
96906	MS35338-46		5	3
96906	MS35649-2252	5310-00-997-1888	4	1
96906	MS39169-15	4730-00-273-8561	5	30
96906	MS51884-3	4730-00-187-4207	6	4
96906	MS51884-7H		8	2
96906	M551953-73		8	17
96906	MS90725-34	5306-00-225-8499	2	28
96906	MS90725-6	5305-00-068-0502	1	4
			4	4
96906	MS90725-64		5	5
96906	MS90725-65	5305-00-269-3215	5	27
96906	MS90728-123	5305-00-071-2079	6	7
11568	M1029B		8	12
11568	M1046		6	21
11568	M1099		9	6

CROSS REFERENCE INDEXES

PART NUMBER INDEX

FSCM	PART NUMBER	STOCK NUMBER	FIG	ITEM
11568	M1100		9	5
11568	M1102		9	4
11568	M1122		7	7
11568	M1296		8	9
11568	M1581		6	18
11568	M1582		6	16
11568	M1583		6	10
11568	M1606		4	6
11568	M1629		8	10
11568	M1668		9	1
11568	M1711		5	22
11568	M1712	5310-01-005-4336	5	14
11568	M1737	5305-00-331-4856	5	23
11568	M1757		4	5
11568	M1820		6	47
11568	M1875		9	7
11568	M1883		4	11
11568	M2097		7	24
11568	M2098		7	5
11568	M2099		7	21
11568	M2100		7	15
11568	M2101		7	12
11568	M30A		5	15
11568	M31A		5	20
11568	M32A		5	21
11568	M432	5305-01-011-3072	5	12
11568	M453A		9	3
11568	M459		6	3
11568	M461	4730-00-213-0651	6	1
11568	M492	4730-00-188-1870	6	2
11568	M5207C	3020-00-837-1270	2	3
11568	M523	4820-00-403-4658	8	15
11568	M54C		5	19
11568	M62		5	18
11568	M673	4130-00-351-7387	5	17
11568	M674	4310-00-204-9681	5	16
11568	M811		8	21
11568	M817		5	36
11568	M835		8	22
11568	M854		1	11
11568	M855		1	10
11568	M856		1	6
11568	M909A	5310-00-655-9544	5	2
11568	M913A		1	8
11568	M935A	5310-01-017-3842	1	7
			2	25
11568	M939A	5310-00-448-7227	1	2
11568	M97A		6	22
11568	M98A		6	23
11568	M982B		8	11
11568	NR1H		8	7

CROSS REFERENCE INDEXES

PART NUMBER INDEX

FSCM	PART NUMBER	STOCK NUMBER	FIG	ITEM
11568	NR101		6	24
11568	NR104		6	39
11568	NR14-6A		5	37
11568	NR2B		5	32
11568	NR29A	5330-00-450-4130	5	38
11568	NR7A		6	9
11568	NR80A		6	41
11568	OS-N4		6	46
11568	P-4543A		7	20
11568	P-4544A	5305-01-064-6251	7	1
11568	P-4824A	6105-01-112-1008	2	2
11568	P3831A		9	2
11568	P4132A		4	9
11568	P4134A		7	6
11568	P4135A		7	19
11568	P4137A		7	8
			7	14
11568	P4640A		4	7
11568	P4644D		8	24
11568	P4827A		8	23
11568	R-10-C	4310-00-430-3488	5	1
11568	RE10-100A		6	28
11568	RE10-2E		5	34
11568	RE10-37	3120-00-811-6046	6	14
11568	RE10-59		7	22
11568	RE10-61		7	23
11568	RE10-62		7	10
			7	16
11568	RE10-99	4730-00-103-5461	8	5
11568	RE14-58		7	4
11568	RE14-70		7	3
11568	RE14-71A		7	2
11568	RE4-12A		5	8
11568	RE7-14	6680-00-377-4915	6	5
11568	RE7-56A		7	9
11568	RE7-57A		7	17
11568	RE7-60		7	11
11568	R10-102		6	11
11568	R10-21		6	12
11568	R10-24		6-	15
11568	R10-4		6	19
11568	R10-5		6	43
11568	R10B2		5	28
11568	R15-4		6	13
11568	R30-24		6	17
81343	SAE512I	4730-00-277-7621	5	10
11568	SB250A		5	11
11568	SE14-30	5330-00-585-9950	6	42
11568	SE14-30A	5330-00-633-6114	6	42
11568	SE14-30B	5330-01-014-4308	6	42
11568	SE14-30C	5330-01-014-4309	6	42

CROSS REFERENCE INDEXES

PART NUMBER INDEX

FSCM	PART NUMBER	STOCK NUMBER	FIG	ITEM
11568	SE14-84	5305-00-151-6876	6	27
11568	SE14-89	5330-00-585-4283	6	38
11568	SE5-2B		5	24
11568	SE5-8		6	8
11568	SE5-82A	4310-00-896-2105	6	34
11568	SE5-83B	2990-00-863-0926	6	37
11568	SE5-86B		6	29
11568	SE5-87		6	30
11568	SE5-88	5310-00-224-0765	5	4
11568	SE5-90	5360-00-850-5541	6	31
11568	SE5-91		6	25
11568	SE5-92A	5315-00-168-2969	6	33
11568	SE5-94		6	35
11568	SE541	4730-00-850-7971	5	6
			8	3
			8	6
11568	S3542	4730-00-277-9741	8	4
11568	UB375		5	31
11568	Z113	4820-00-631-3397	5	26
11568	Z115	4310-00-631-3396	5	33
11568	Z179C	4310-00-773-7986	6	49
11568	Z189B	4310-00-649-8398	6	48
11568	Z307		1	1
11568	Z307-1		1	12
11568	Z513		5	9
11568	Z538A	4720-00-874-3179	8	14
11568	Z57C	4820-01-014-4402	8	8
11568	Z60A		6	20
11568	Z66A		5	13
11568	Z812	4820-00-631-3399	5	29
11568	Z813	4310-00-631-3398	5	35
92940	04A091010200	3110-00-533-9592	2	7
92940	04A091230100		2	14
61349	050755	6685-00-425-2373	8	19
92940	07C022210412		2	6
36422	1X485	5305-01-015-3345	2	1
92940	11B037270100		2	9
75336	112C 1/4 175		8	1
92940	12B037260100		2	11
75336	125 1-4 75PSI	4820-00-421-6984	5	25
11568	14Twx32		4	8
11568	14Twx37		4	10
60038	14138A	3110-00-100-3150	6	44
60038	14276	3110-00-100-0516	6	45
92940	15A088402000	5910-01-104-8896	2	18
92940	16B045990100		2	17
92940	17A025100800	5930-01-105-3520	2	15
92976	1825A	4820-00-849-1220	8	18
92940	19A012545100		2	5
92940	20B046020100		2	23
06853	203897	4730-00-277-9741	5	7

CROSS REFERENCE INDEXES

PART NUMBER INDEX

FSCM	PART NUMBER	STOCK NUMBER	FIG	ITEM
92940	21A021180300		2	20
92940	22A022920200		2	8
79150	2203 TYPE A		7	13
			7	18
92940	23A027410600		2	4
92940	24A092850300		2	10
92940	28A093170100		2	12
92940	29A082870100		2	21
92940	29A093280100		2	22
27315	3612V004	5310-00-007-9869	1	9
			6	32
12603	4E07J		6	36
94894	6-1J21506		8	13
23826	69HA1	5930-00-087-4027	3	1
92940	76B507015820		2	13
92940	93A118524002		2	19
92940	93B211564002		2	24
92940	93B240616012		2	16

CROSS REFERENCE INDEXES

FIG	ITEM	FIGURE AND ITEM NUMBER INDEX		PART NUMBER
		STOCK NUMBER	FSCM	
1	1		11568	Z307
1	2	5310-00-448-7227	11568	M939A
1	3	5310-00-582-5965	96906	MS35338-44
1	4	5305-00-068-0502	96906	MS90725-6
1	5	5310-00-950-1310	96906	MS27183-4
1	6		11568	M856
1	7	5310-01-017-3842	11568	M935A
1	8		11568	M913A
1	9	5310-00-007-9869	27315	3612V004
1	10		11568	M855
1	11		11568	M854
1	12		11568	Z307-1
1	13	3030-01-104-1531	24161	A63-2 MATCHED SET
2	1	5305-01-015-3345	36422	1X485
2	2	6105-01-112-1008	11568	P-4824A
2	3	3020-00-837-1270	11568	M5207C
2	4		92940	23A027410600
2	5		92940	19A012545100
2	6		92940	07C022210412
2	7	3110-00-533-9592	92940	04A091010200
2	8		92940	22A022920200
2	9		92940	11B037270100
2	10		92940	24A092850300
2	11		92940	12B037260100
2	12		92940	28A093170100
2	13		92940	76B507015820
2	14		92940	04A091230100
2	15	5930-01-105-3520	92940	17A025100800
2	16		92940	93B240616012
2	17		92940	16B045990100
2	18	5910-01-104-8896	92940	15A088402000
2	19		92940	93A118524002
2	20		92940	21A-021180300
2	21		92940	29A082870100
2	22		92940	29A093280100
2	23		92940	20B046020100
2	24		92940	93B211564002
2	25	5310-01-017-3842	11568	M935A
2	26		96906	MS35338-45
2	27	5310-00-809-3078	96906	MS27183-11
2	28	5306-00-225-8499	96906	MS90725-34
3	1	5930-00-087-4027	23826	69HA1
3	2		23826	D9943-10
3	3		23826	D274-1
3	4		23826	D467-1
3	5		23826	D323-1
3	6		23826	D9096-1
3	7		23826	D9935-1
3	8		23826	D1673-1
3	9	5360-01-040-3845	23826	DZ76-1

CROSS REFERENCE INDEXES

FIGURE AND ITEM NUMBER INDEX				
FIG	ITEM	STOCK NUMBER	FSCM	PART NUMBER
3	10		23826	D10037-1
3	11		23826	D357-1
3	12		23826	D317-2
3	13		23826	D1366-1
3	14		23826	D10456-1
3	15		23826	D9078-1
3	16		23826	D9271-15
4	1	5310-00-997-1888	96906	MS35649-2252
4	2	5310-00-582-5965	96906	MS35338-44
4	3	5310-00-950-1310	96906	MS27183-4
4	4	5305-00-068-0502	96906	MS90725-6
4	5		11568	M1757
4	6		11568	M1606
4	i7		11568	P4640A
4	8		11568	14TWX32
4	9		11568	P4132A
4	10		11568	14TWX37
4	11		11568	M1883
4	12		52090	G213C
4	13		52090	G203C
4	14		52090	G223C
4	15	6110-01-021-2636	52090	G10C246
4	16	5950-01-105-7161	30086	G3T0351
4	17		52090	E20COL1
4	18		30086	F11NOC
4	19		52090	E11ESS
5	1	4310-00-430-3488	11568	R-10-C
5	2	5310-00-655-9544	11568	M909A
5	3		96906	MS3'5338-46
5	4	5310-00-224-0765	11568	SE5-88
5	5		96906	MS90725-64
5	6	4730-00-850-7971	11568	SE541
5	7	4730-00-277-9741	06853	203897
5	8		11568	RE4-12A
5	9		11568	Z513
5	10	4730-00-277-7621	81343	SAE512I
5	11		11568	SB250A
5	12	5305-01-011-3072	11568	M432
5	13		11568	Z66A
5	14	5310-01-005-4336	11568	M1712
5	15		11568	M30A
5	16	4310-00-204-9681	11568	M674
5	17	4130-00-351-7387	11568	M673
5	18		11568	M62
5	19		11568	M54C
5	20		11568	M31A
5	21		11568	M32A
5	22		11568	M1711
5	23	5305-00-331-4856	11568	M1737
5	24		11568	SE5-2B
5	25	4820-00-421-6984	75336	125 1-4 75PSI

CROSS REFERENCE INDEXES

FIGURE AND ITEM NUMBER INDEX				
FIG	ITEM	STOCK NUMBER	FSCM	PART NUMBER
5	26	4820-00-631-3397	11568	Z113
5	27	5305-00-269-3215	96906	MS90725-65
5	28		11568	R10B2
5	29	4820-00-631-3399	11568	Z812
5	30	4730-00-273-8561	96906	MS39169-15
5	31		11568	UB375
5	32		11568	NR2B
5	33	4310-00-631-3396	11568	Z115
5	34		11568	RE10-2E
5	35	4310-00-631-3398	11568	Z813
5	36		11568	M817
5	37		11568	NR14-6A
5	38	5330-00-450-4130	11568	NR29A
6	1	4730-00-213-0651	11568	M461
6	2	4730-00-188-1870	11568	M492
6	3		11568	M459
6	4	4730-00-187-4207	96906	MS51884-3
6	5	6680-00-377-4915	11568	RE7-14
6	6		11568	M-465
6	7	5305-00-071-2079	96906	MS90728-123
6	8		11568	SE5-8
6	9		11568	NR7A
6	10		11568	M1583
6	11		11568	R10-102
6	12		11568	R10-21
6	13		11568	R15-4
6	14	3120-00-811-6046	11568	RE10-37
6	15		11568	R10-24
6	16		11568	M1582
6	17		11568	R30-24
6	18		11568	M1581
6	19		11568	R10-4
6	20		11568	Z60A
6	21		11568	M1046
6	22		11568	M97A
6	23		11568	M98A
6	24		11568	NR101
6	25		11568	SE5-91
6	26	3110-00-198-1050	96906	MS19060-4814
6	27	5305-00-151-6876	11568	SE14-84
6	28		11568	RE10-100A
6	29		11568	SE5-86B
6	30		11568	SE5-87
6	31	5360-00-850-5541	11568	SE5-90
6	32	5310-00-007-9869	27315	3612V004
6	33	5315-00-168-2969	11568	SE5-92A
6	34	4310-00-896-2105	11568	SE5-82A
6	35		11568	SE5-94
6	36		12603	4E07J
6	37	2990-00-863-0926	11568	SE5-83B
6	38	5330-00-585-4283	11568	SE14-89

CROSS REFERENCE INDEXES

FIGURE AND ITEM NUMBER INDEX				
FIG	ITEM	STOCK NUMBER	FSCM	PART NUMBER
6	39		11568	NR104
6	40	5305-00-942-2196	96906	MS18154-60
6	41		11568	NR80A
6	42	5330-00-585-9950	11568	SE14-30
6	42	5330-00-633-6114	11568	SE14-30A
6	42	5330-01-014-4308	11568	SE14-30B
6	42	5330-01-014-4309	11568	SE14-30C
6	43		11568	R10-5
6	44	3110-00-100-3150	60038	14138A
6	45	3110-00-100-0516	60038	14276
6	46		11568	OS-N4
6	47		11568	M1820
6	48	4310-00-649-8398	11568	Z189B
6	49	4310-00-773-7986	11568	Z179C
7	1	5305-01-064-6251	11568	P-4544A
7	2		11568	RE14-71A
7	3		11568	RE14-70
7	4		11568	RE14-58
7	5		11568	M2098
7	6		11568	P4134A
7	7		11568	M1122
7	8		11568	P4137A
7	9		11568	RE7-56A
7	10		11568	RE10-62
7	11		11568	RE7-60
7	12		11568	M2101
7	13		79150	2203 TYPE A
7	14		11568	P4137A
7	15		11568	M2100
7	16		11568	RE100-62
7	17		11568	RE7-57A
7	18		79150	2203 TYPE A
7	19		11568	P4135A
7	20		11568	P-4543A
7	21		11568	M2099
7	22		11568	RE10-59
7	23		11568	RE10-61
7	24		11568	M2097
8	1		75336	112C 1/4 175
8	2		96906	MS51884-7H
8	3		11568	SE541
8	4	4730-00-277-9741	11568	S3542
8	5	4730-00-103-5461	11568	RE10-99
8	6		11568	SE541
8	7		11568	NR1H
8	8	4820-01-014-4402	11568	Z57C
8	9		11568	M1296
8	10		11568	M1629
8	11		11568	M982B
8	12		11568	M1029B
8	13		94894	61J21506

CROSS REFERENCE INDEXES

FIG	ITEM	FIGURE AND ITEM NUMBER INDEX		PART NUMBER
		STOCK NUMBER	FSCM	
8	14	4720-00-874-3179	11568	Z538A
8	15	4820-00-403-4658	11568	M523
8	16	4730-00-277-1896	96906	MS14315-5X
8	17		96906	MS51953-73
8	18	4820-00-849-1220	92976	1825A
8	19	6685-00-425-2373	61349	050755
8	20	5305-00-253-5615	96906	MS21318-21
8	21		11568	M811
8	22		11568	M835
8	23		11568	P4827A
8	24		11568	P4644D
9	1		11568	M1668
9	2		11568	P3831A
9	3		11568	M453A
9	4		11568	M1102
9	5		11568	M1100
9	6		11568	M1099
9	7		11568	M1875

By Order of the Secretary of the Army:

CARL E. VUONO
General, United States Army
Chief of Staff


Official:

WILLIAM J. MEEHAN, II
Brigadier General, United States Army
The Adjutant General

DISTRIBUTION:

To be distributed in accordance with DA Form 12-25A, Unit, Direct Support and General Support Maintenance requirements for Compressor, Reciprocating, Air, Electric, Receiver Mounted, 5 CFM, 175 PSI (HR2-6M-2)

RECOMMENDED CHANGES TO EQUIPMENT TECHNICAL PUBLICATIONS

 <div style="border: 1px solid black; border-radius: 15px; padding: 5px; display: inline-block; margin-left: 20px;"> <p style="margin: 0;"><i>THEN...JOT DOWN THE DOPE ABOUT IT ON THIS FORM. CAREFULLY TEAR IT OUT, FOLD IT AND DROP IT IN THE MAIL.</i></p> </div>		SOMETHING WRONG WITH PUBLICATION	
		FROM: (PRINT YOUR UNIT'S COMPLETE ADDRESS)	
PUBLICATION NUMBER		DATE SENT	
PUBLICATION DATE		PUBLICATION TITLE	
IN THIS SPACE, TELL WHAT IS WRONG AND WHAT SHOULD BE DONE ABOUT IT.			
BE EXACT PIN-POINT WHERE IT IS			
PAGE NO.	PARA-GRAPH	FIGURE NO.	TABLE NO.
PRINTED NAME, GRADE OR TITLE AND TELEPHONE NUMBER		SIGN HERE	

The Metric System and Equivalents

Linear Measure

1 centimeter = 10 millimeters = .39 inch
 1 decimeter = 10 centimeters = 3.94 inches
 1 meter = 10 decimeters = 39.37 inches
 1 dekameter = 10 meters = 32.8 feet
 1 hectometer = 10 dekameters = 328.08 feet
 1 kilometer = 10 hectometers = 3,280.8 feet

Weights

1 centigram = 10 milligrams = .15 grain
 1 decigram = 10 centigrams = 1.54 grains
 1 gram = 10 decigrams = .035 ounce
 1 decagram = 10 grams = .35 ounce
 1 hectogram = 10 decagrams = 3.52 ounces
 1 kilogram = 10 hectograms = 2.2 pounds
 1 quintal = 100 kilograms = 220.46 pounds
 1 metric ton = 10 quintals = 1.1 short tons

Liquid Measure

1 centiliter = 10 milliliters = .34 fl. ounce
 1 deciliter = 10 centiliters = 3.38 fl. ounces
 1 liter = 10 deciliters = 33.81 fl. ounces
 1 dekaliter = 10 liters = 2.64 gallons
 1 hectoliter = 10 dekaliters = 26.42 gallons
 1 kiloliter = 10 hectoliters = 264.18 gallons

Square Measure

1 sq. centimeter = 100 sq. millimeters = .155 sq. inch
 1 sq. decimeter = 100 sq. centimeters = 15.5 sq. inches
 1 sq. meter (centare) = 100 sq. decimeters = 10.76 sq. feet
 1 sq. dekameter (are) = 100 sq. meters = 1,076.4 sq. feet
 1 sq. hectometer (hectare) = 100 sq. dekameters = 2.47 acres
 1 sq. kilometer = 100 sq. hectometers = .386 sq. mile

Cubic Measure

1 cu. centimeter = 1000 cu. millimeters = .06 cu. inch
 1 cu. decimeter = 1000 cu. centimeters = 61.02 cu. inches
 1 cu. meter = 1000 cu. decimeters = 35.31 cu. feet

Approximate Conversion Factors

To change	To	Multiply by	To change	To	Multiply by
inches	centimeters	2.540	ounce-inches	Newton-meters	.007062
feet	meters	.305	centimeters	inches	.394
yards	meters	.914	meters	feet	3.280
miles	kilometers	1.609	meters	yards	1.094
square inches	square centimeters	6.451	kilometers	miles	.621
square feet	square meters	.093	square centimeters	square inches	.155
square yards	square meters	.836	square meters	square feet	10.764
square miles	square kilometers	2.590	square meters	square yards	1.196
acres	square hectometers	.405	square kilometers	square miles	.386
cubic feet	cubic meters	.028	square hectometers	acres	2.471
cubic yards	cubic meters	.765	cubic meters	cubic feet	35.315
fluid ounces	milliliters	29.573	cubic meters	cubic yards	1.308
pints	liters	.473	milliliters	fluid ounces	.034
quarts	liters	.946	liters	pints	2.113
gallons	liters	3.785	liters	quarts	1.057
ounces	grams	28.349	liters	gallons	.264
pounds	kilograms	.454	grams	ounces	.035
short tons	metric tons	.907	kilograms	pounds	2.205
pound-feet	Newton-meters	1.356	metric tons	short tons	1.102
pound-inches	Newton-meters	.11296			

Temperature (Exact)

°F	Fahrenheit temperature	5/9 (after subtracting 32)	Celsius temperature	°C
----	------------------------	----------------------------	---------------------	----

